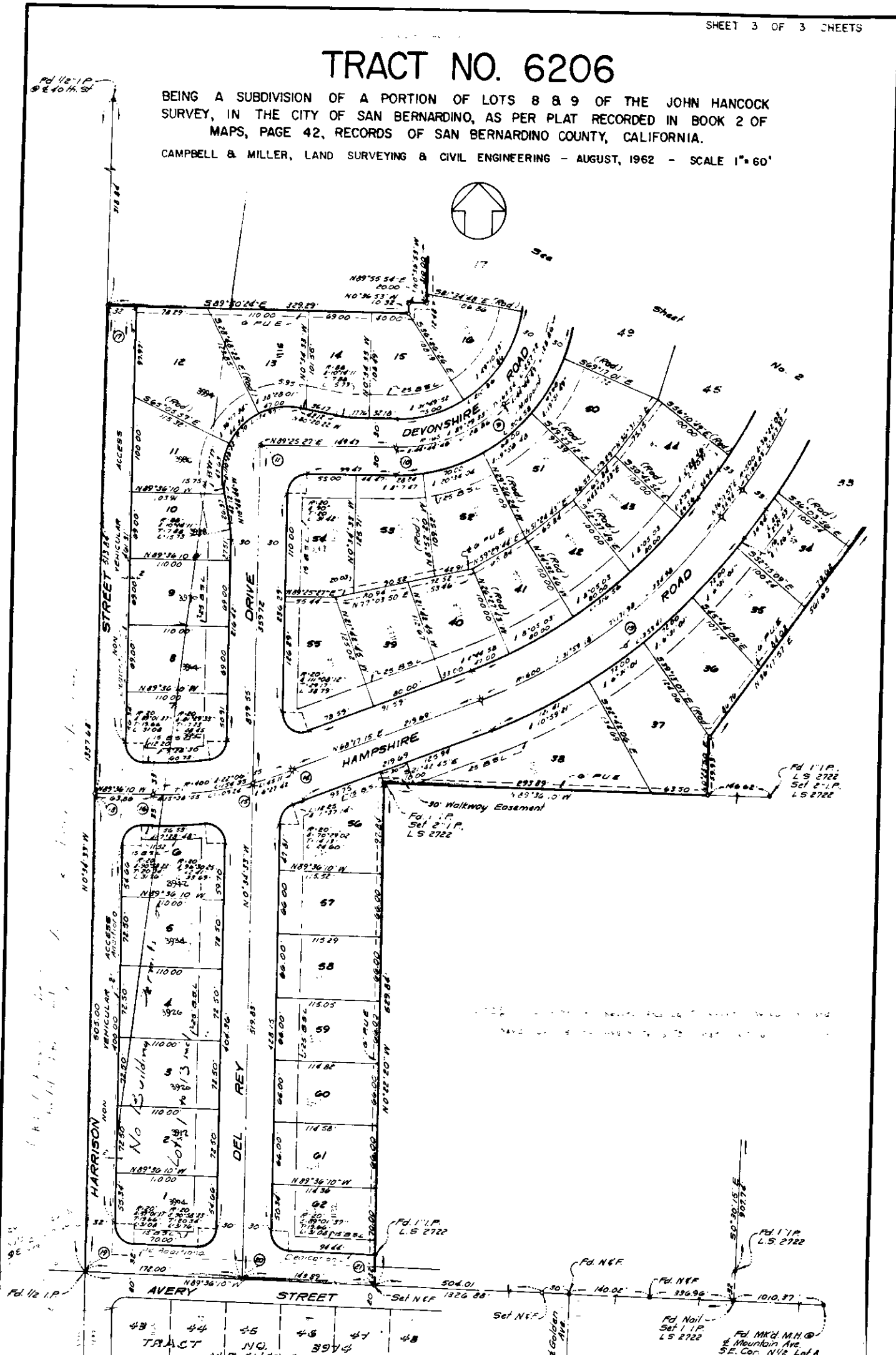


# TRACT NO. 6206

BEING A SUBDIVISION OF A PORTION OF LOTS 8 & 9 OF THE JOHN HANCOCK SURVEY, IN THE CITY OF SAN BERNARDINO, AS PER PLAT RECORDED IN BOOK 2 OF MAPS, PAGE 42, RECORDS OF SAN BERNARDINO COUNTY, CALIFORNIA.

CAMPBELL & MILLER, LAND SURVEYING & CIVIL ENGINEERING - AUGUST, 1962 - SCALE 1"=60'



13  
13

13  
13

Fd. 11 P. L.S. 2722  
Set N.E.F.  
1010.97

Fd. 11 P. L.S. 2722

Fd. N.E.F.

Fd. 11 P. L.S. 2722

TRACT NO. 6206